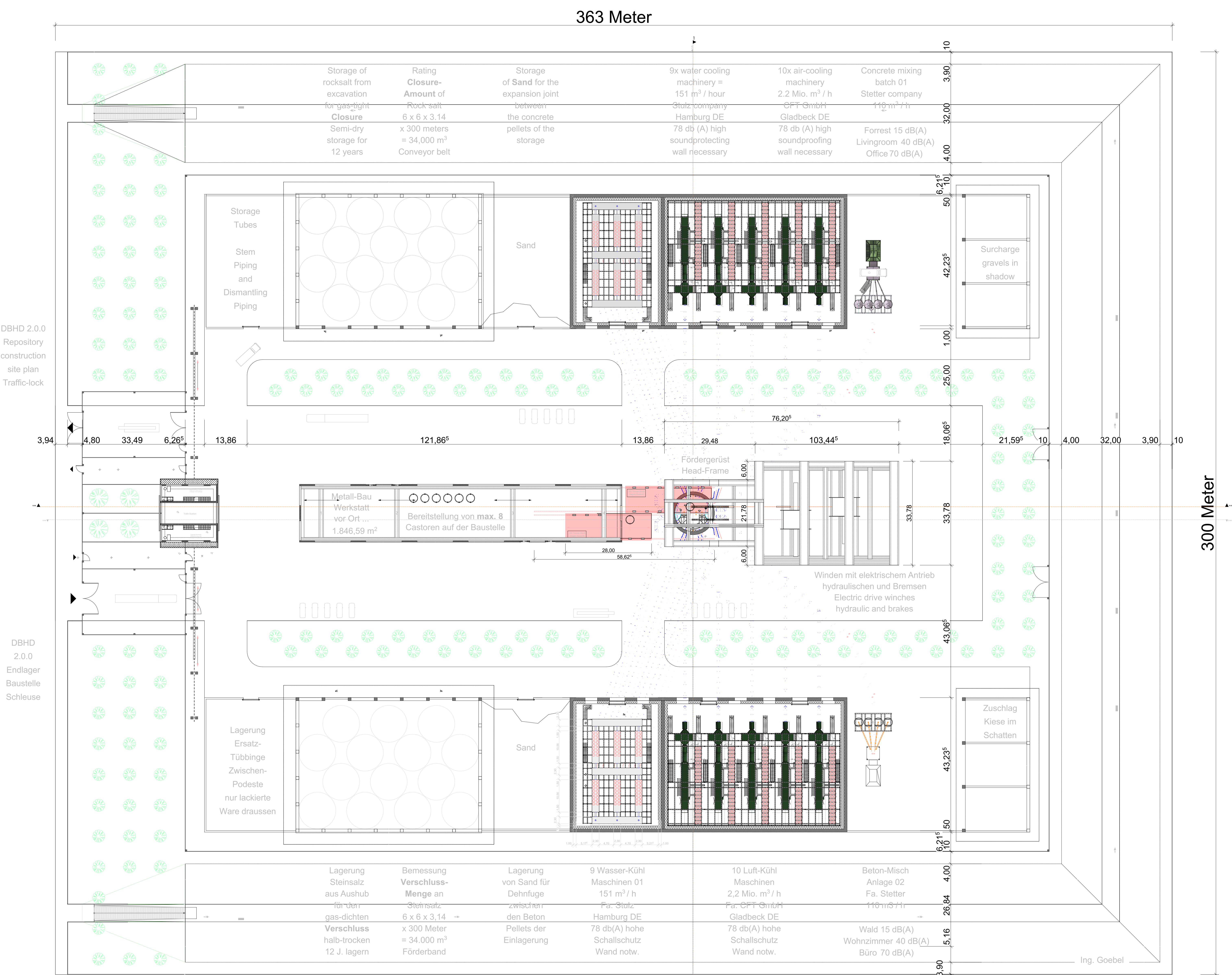


# DBHD 2.0.0 Building Site Plan - Biosphere Buildings + Shaft - by Ing. Goebel

best viewed in Acrobat Reader - zoom in and find out - GDF = Geological Disposal Facility aka. "Endlager"  
 this plan shows how to build a "deep, dry and gas-tight closed" nuclear repository in rock salt or clayrock.



Schnitt - Cut 02

Schnitt - Cut 07

